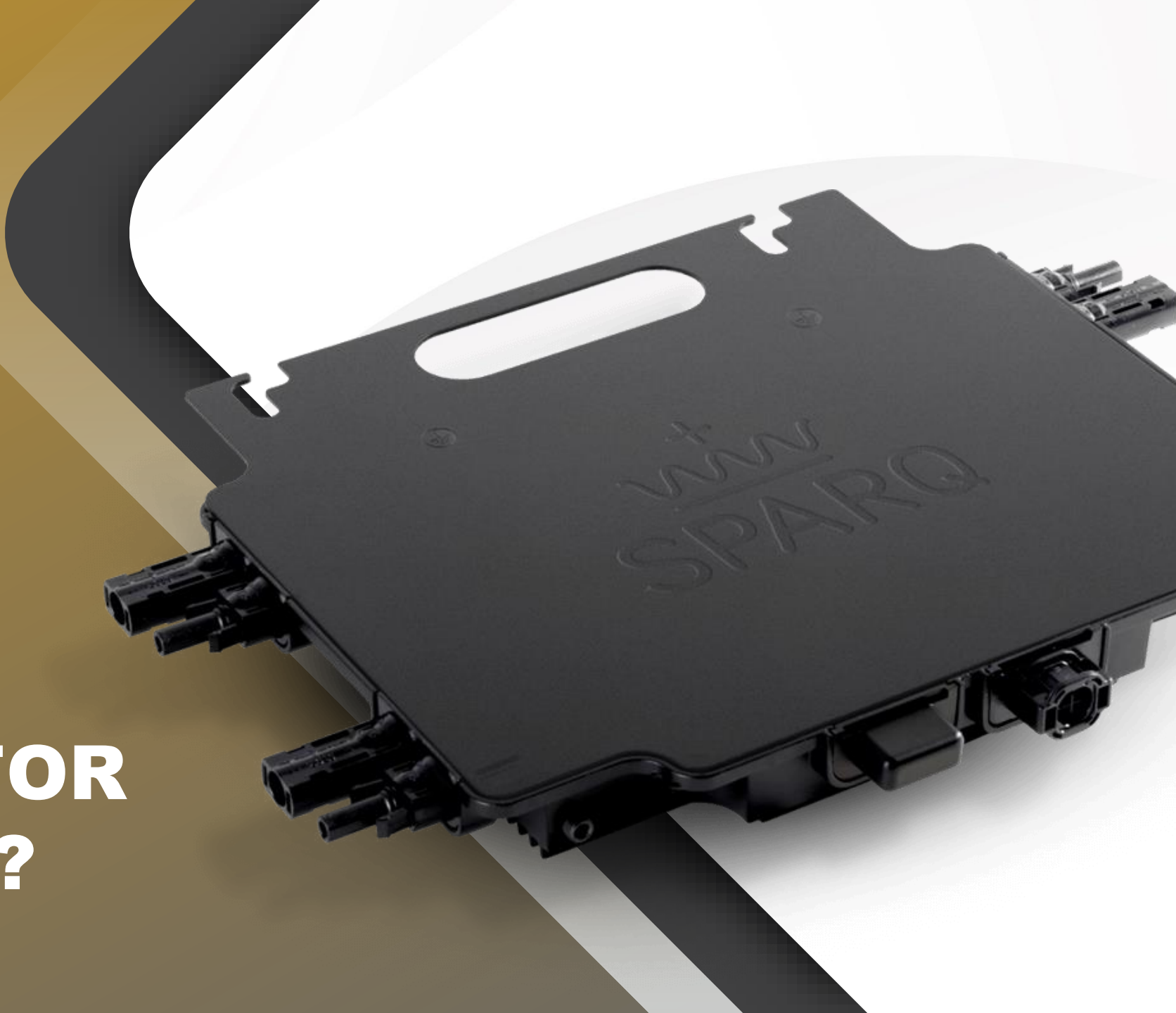




WHY SPARQ FOR HOMEOWNER?



KEY QUESTIONS FROM HOMEOWNER



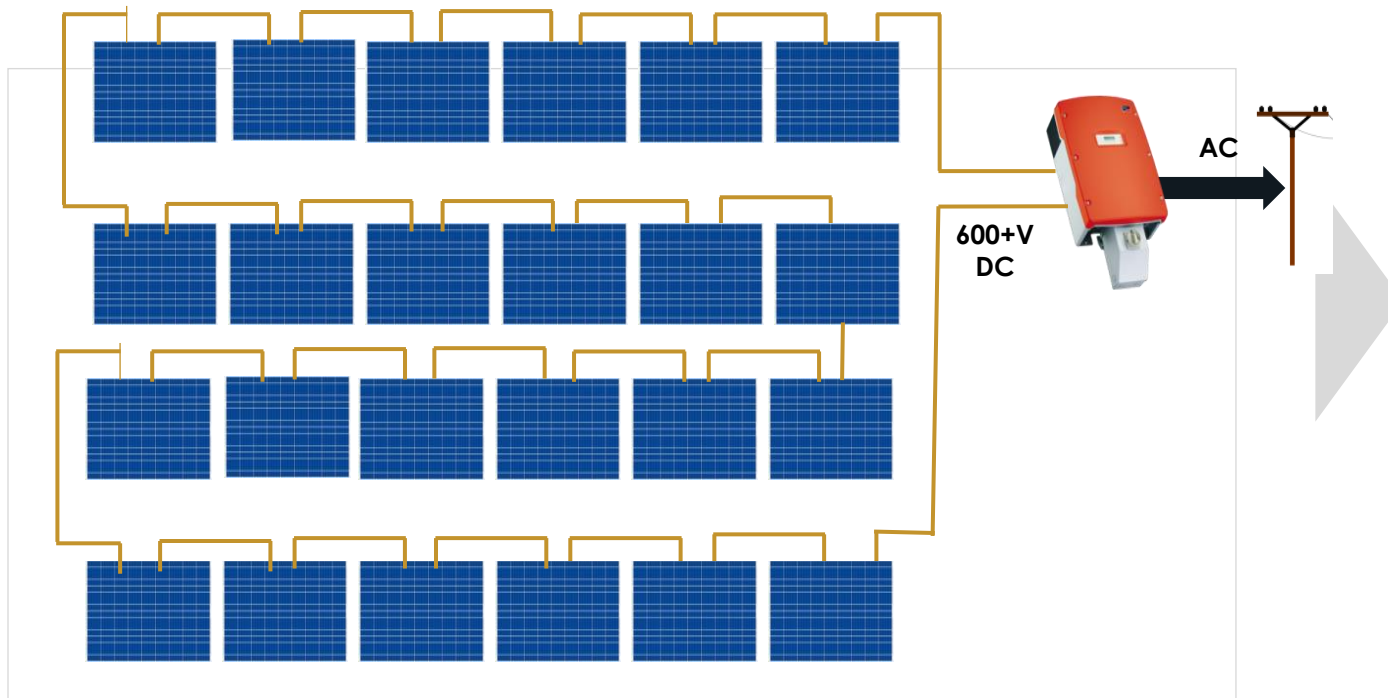
- What are the Limitations of Existing Leading Brands?
 - Why Specifically Ask for Sparq Products?
-

- **WHAT ARE THE LIMITATIONS OF EXISTING LEADING BRANDS?**

TRADITIONAL STRING INVERTERS



Traditional String Inverter: Many Panels In Series and One Central DC-AC Inverter



Multiple series Panels + → Cheap, But...
One HV Central Inverter

Reliability

- Design life of 10 years → requires replacement
- Single point of failure

Productivity

- Module mismatch, shading, soiling, “Christmas light” effect

Design & installation

- Requires specialized design and installation
- Requires expensive Balance of System

Safety

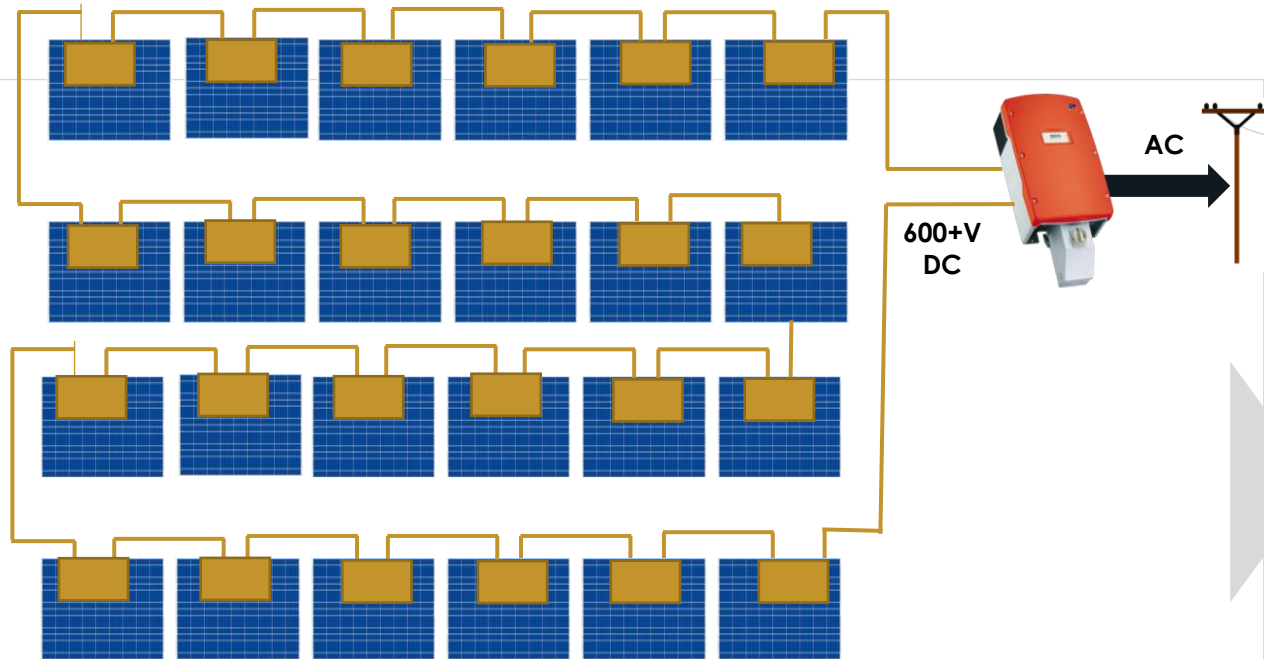
- High voltage (600V+) arc faults → leading cause of fires of PV installations
- Always live; no module level disconnect/shut-off



MANY OPTIMIZERS + STRING INVERTER



SolarEdge: One Optimizer/Panel + Many Panels In Series + HV DC-AC Inverter



One Optimizer
Per Panel

+ HV Central
Inverter

Medium Cost
Safety Risk

Reliability

- Design life of 12 years → requires costly replacement
- Single point of failure

Productivity

- + 5-20% more energy as a result of individual Maximum Power Point Tracking (MPPT)

Design & installation

- String sizing required – difficult to design, install, maintain and repair

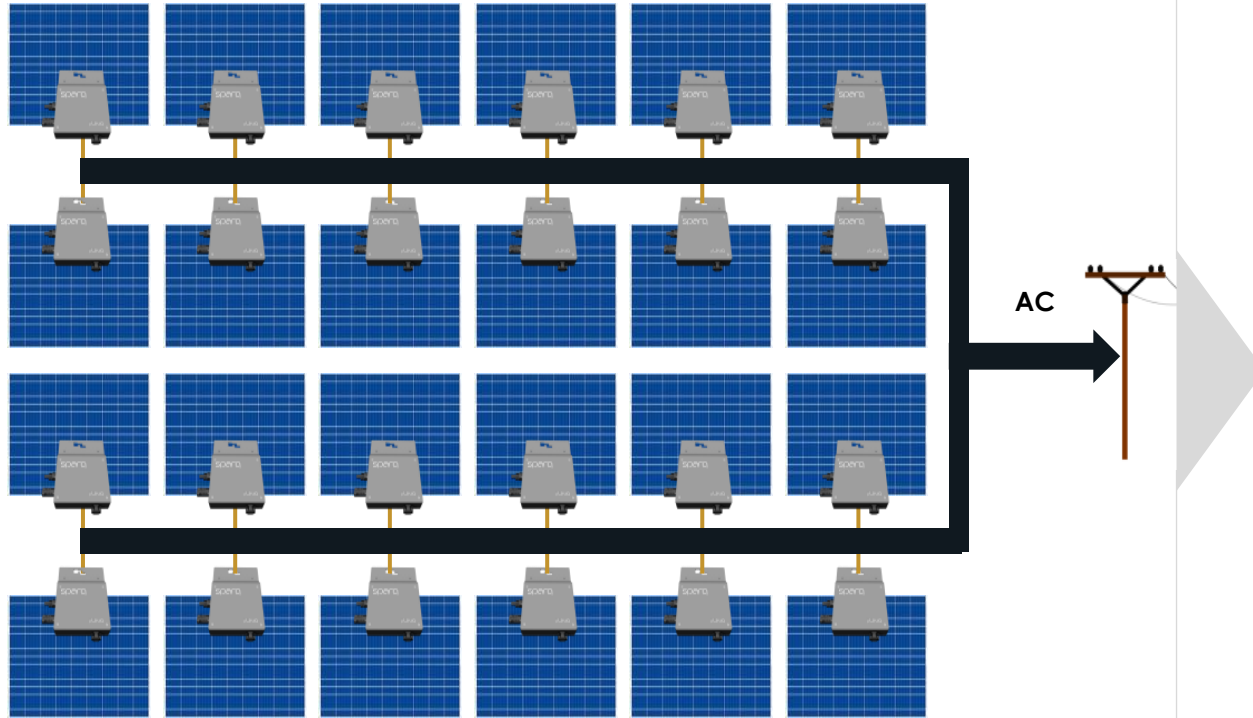
Safety

- High voltage (600V+) arc faults → leading cause of fires in PV installations, electrical shock hazard
- + Module level disconnect/shut-off

SINGLE-CHANNEL MICROINVERTERS



Enphase: One Single-Channel Microinverter with MPPT per Panel



One Microinverter per Panel →

Cost
High

Reliability

- + No single point of failure
- Design life of 12 years (Electrolytic Capacitor)

Productivity

- + 5-20% more energy as a result of individual Maximum Power Point Tracking (MPPT)

Design & installation

- + No risky high voltage DC simplifies design and installation
- High overall life-cycle cost (manufacture, install and repair after 12 years)

Safety

- + “All Alternating Current (AC)” solution at low voltage eliminates arc faults



LIMITATIONS OF LEADING BRAND PV SYSTEMS



SolarEdge String Inverters

- X Safety risk due to high voltage DC and arcing**
- X Conventional power electronics and time-averaged linear control method**
- X Require large electrolytic capacitors**
- X No galvanic isolation**
- X Low MTBF, poor system availability and reliability**
- X Multiple Single point failures in the system**
- X Low energy harvesting without optimizers**
- X Optimizers, an after thought for shading and MPPT**
- X Require excessive power quality and EMI fi**
- X Excessive volume, weight and cost penalty**
- X Low energy harvesting due to power clipping at high ambient temperatures**
- X Inefficient supply chain, tedious to install & repair**

Enphase Single-Channel Microinverters

- X Conventional Flyback boost Converters**
- X Conventional power electronics and time-averaged linear control method**
- X Mainly H/W based with simplified control methods using averaged models**
- X Require huge electrolytic capacitors**
- X Low MTBF and poor reliability**
- X Require excessive power quality and EMI due to high Total Harmonic Distortion**
- X Excessive volume, weight and cost penalty**
- X Low energy harvesting due to power clipping at high end of the normal operational ambient temperatures**
- X Inefficient supply chain, tedious to install & repair**

Competing microinverters suffer from poor performance and reliability due to use of conventional H/W based technologies with linear control techniques.

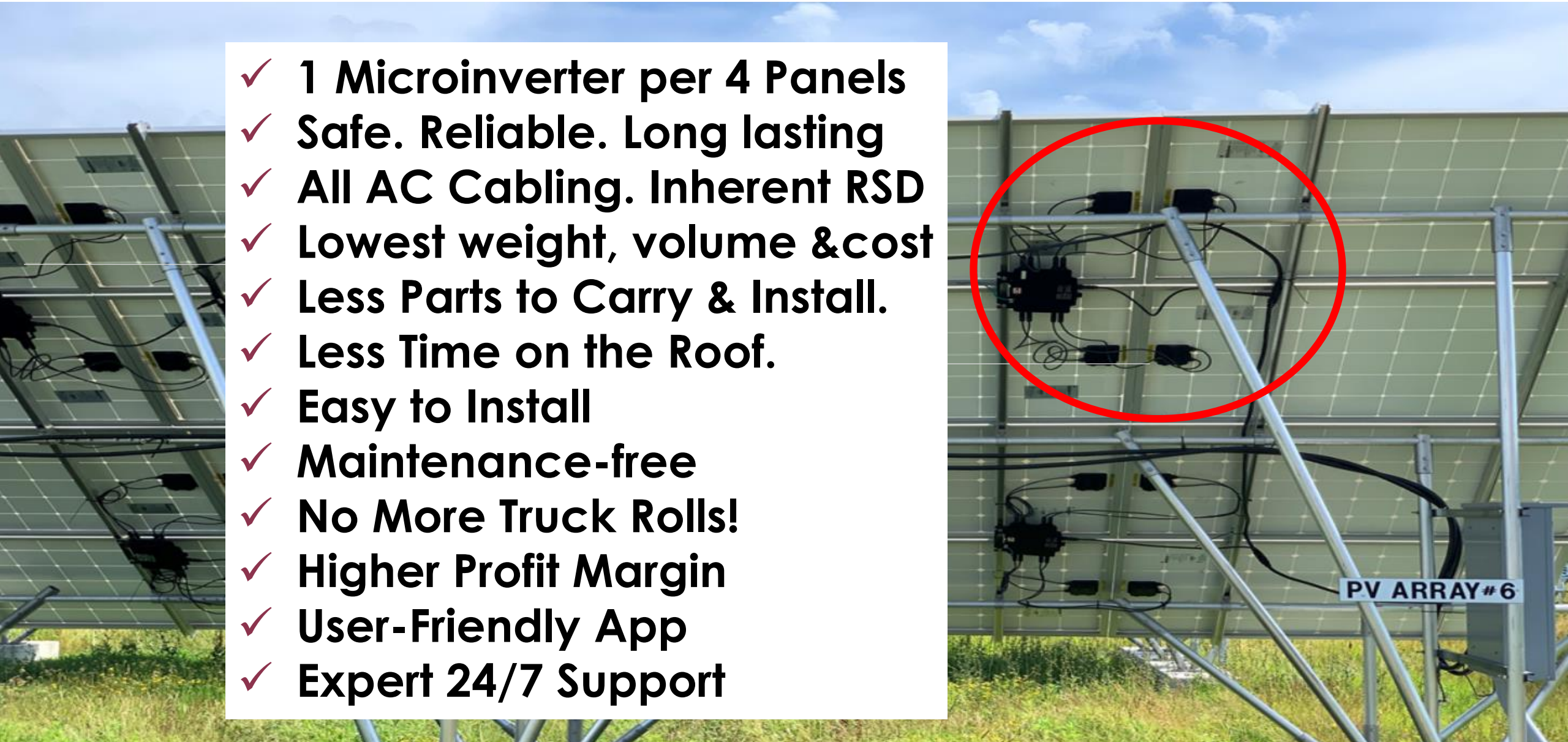
- **WHY SPECIFICALLY ASK FOR**
 - **SPARQ PRODUCTS?**



SPARQ QUAD ARCHITECTURE ADVANTAGE!



- ✓ 1 Microinverter per 4 Panels
- ✓ Safe. Reliable. Long lasting
- ✓ All AC Cabling. Inherent RSD
- ✓ Lowest weight, volume & cost
- ✓ Less Parts to Carry & Install.
- ✓ Less Time on the Roof.
- ✓ Easy to Install
- ✓ Maintenance-free
- ✓ No More Truck Rolls!
- ✓ Higher Profit Margin
- ✓ User-Friendly App
- ✓ Expert 24/7 Support



STANDARD Q2000 PRODUCT FAMILY OFFERING

Best-in-Class Single and Three Phase Microinverters, Battery Storage and Energy Management

Q2000
1-Phase
Dual mode



Q2000
3-Phase
Solar water Pump



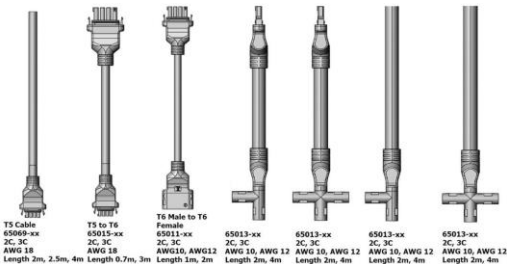
Q2000
Energy Storage



SparqLinq
Gateway



AC Cabling



SparqVu
Web Monitoring

SparqSync
Mobile App

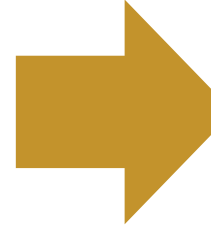


SPARQ QUAD MICROINVERTERS



Best-Selling Microinverter

Sparq Quad Microinverter

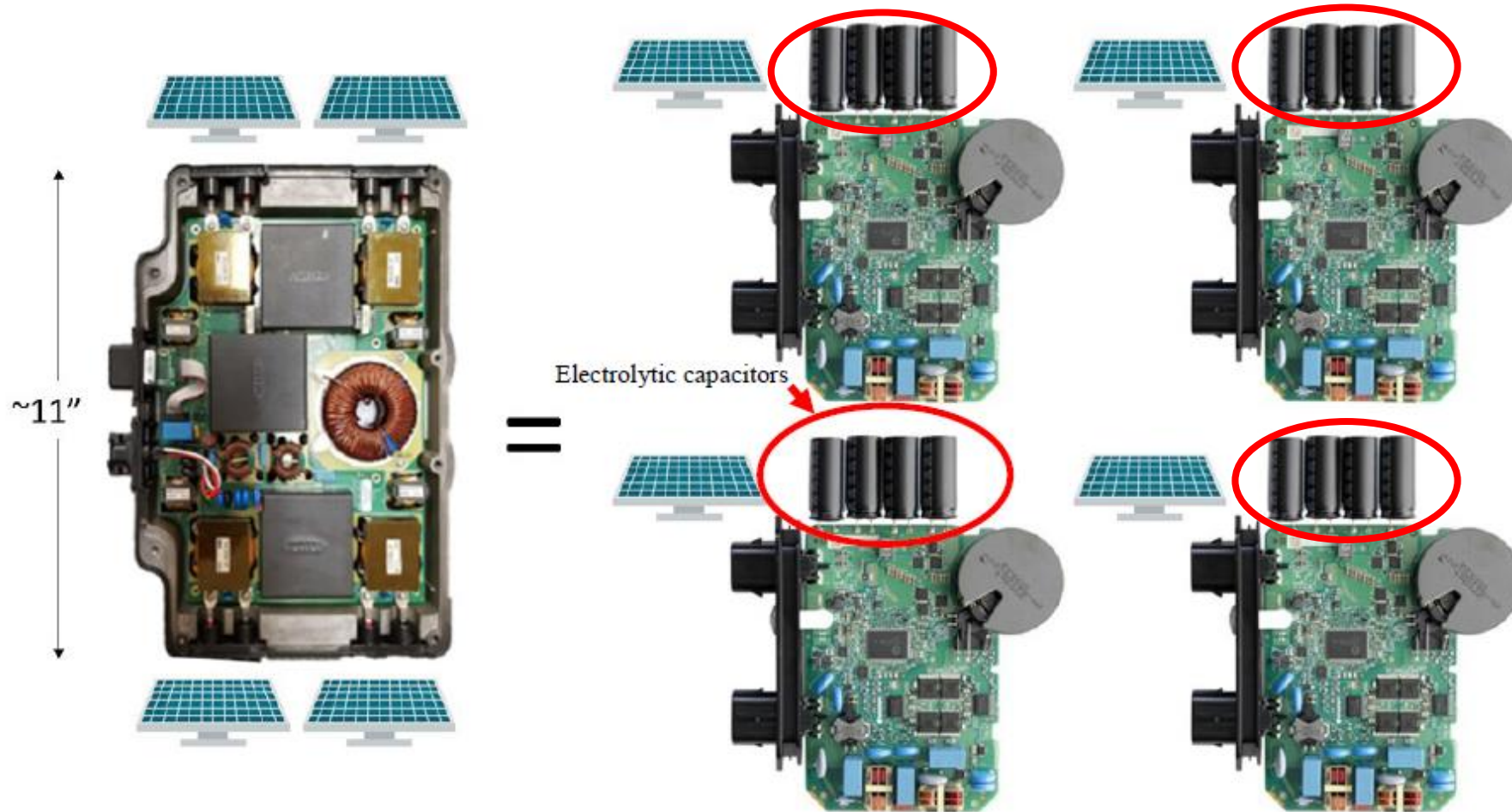


SPARQ's Quad Architecture Integrates FOUR Microinverters in ONE Enclosure.

SPARQ MICROINVERTER VS. LEADING BRAND



Improving Reliability and Reducing Cost of Supply-Chain, Manufacturing and Installation



SPARQ Microinverters Eliminates Electrolytic-Caps and All Other Low-Reliability Parts

SPARQ PRODUCTS VALUE PROPOSITION



Best-in-Class Microinverters Disrupting the PV Industry!

Performance

- ✓ Software centric flexible Power Electronics with accurate real-time nonlinear control
- ✓ Ultra high frequency, soft switching topology
- ✓ Individual MPPT for each panel
- ✓ No risk of HV DC arcing or personnel electric shock
- ✓ Lowest weight, highest weight density (W/kg)
- ✓ Lowest volume, highest power density (W/ in³)
- ✓ Maximum Energy Harvesting
- ✓ Dual Mode Operation (On-grid & Off-grid)
- ✓ Grid-Resilience without energy storage
- ✓ Grid independence and energy self-sufficiency
- ✓ Future ready for being flexible and scalable
- ✓ SparqLinq: advanced gateway to rule them all
- ✓ SparqVu: Web monitoring with Intuitive displays
- ✓ SparqSync: user-Friendly mobile app

Safety & Reliability

- ✓ No Electrolytic Capacitor
- ✓ Other low-life components eliminated
- ✓ Safe, all-AC cabling with inherent Rapid-Shut-Down (RSD) compliance
- ✓ No risk of HV DC arcing
- ✓ No Risk of HV electric shock hazard for 1st responders
- ✓ High reliability
- ✓ High system availability
- ✓ No PV system single point failure
- ✓ Fewer system components to install and maintain results in high MTBF
- ✓ Best-in-class Longevity

Cost-Effectiveness

- ✓ Quad Architecture
- ✓ Reduced manufacturing BOM
- ✓ Reduced Balance of System (cabling, grounding, junction boxes etc)
- ✓ Reduced manufacturing cost
- ✓ Reduced installation cost
- ✓ Maintenance-free
- ✓ Lowest cycle-life-cost
- ✓ Outlier on Performance-Cost Curve

Highest Performance, Safe and Most Reliable, Lowest weight, Volume and Cost.

THANK YOU!



CAUTIONARY STATEMENT



The information contained in this corporate presentation has been prepared by SPARQ Corp. (the "Company") and contains confidential information pertaining to the business and operations of the Company. The information contained in this presentation: (a) is provided as at the date hereof, is subject to change without notice, and is based on publicly available information, internally developed data as well as third party information from other sources; and (b) is for information purposes only and shall not constitute an offer to buy, sell, issue or subscribe for, or the solicitation of an offer to buy, sell or issue, or subscribe for any securities in any jurisdiction in which such offer, solicitation or sale would be unlawful. Where any opinion or belief is expressed in this presentation, it is based on certain assumptions and limitations and is an expression of present opinion or belief only. Any third party information has not been independently verified. While the Company may not have verified the third party information, it believes that it obtained the information from reliable sources and has no reason to believe it is not accurate in all material respects. No warranties or representations can be made as to the origin, validity, accuracy, completeness, currency or reliability of the information. The Company disclaims and excludes all liability (to the extent permitted by law), for losses, claims, damages, demands, costs and expenses of whatever nature arising in any way out of or in connection with the information in this presentation, its accuracy, completeness or by reason of reliance by any person on any of it. This presentation should not be construed as legal, financial or tax advice to any individual, as each individual's circumstances are different. Readers should consult with their own professional advisors regarding their particular circumstances.

Certain information set forth in this presentation, together with any supplements and any other information that may be furnished to prospective investors by the Company in connection therewith, contains "forward-looking statements" and "forward-looking information" within the meaning of applicable Canadian securities legislation (referred to herein as forward-looking statements). Except for statements of historical fact, certain information contained herein constitutes forward-looking statements which include but are not limited to statements related to activities, events or developments that the Company expects or anticipates will or may occur in the future, statements related to the Company's business strategy objectives and goals, and management's assessment of future plans and operations which are based on current internal expectations, estimates, projections, assumptions and beliefs, which may prove to be incorrect. Forward-looking statements can often be identified by the use of words such as "may", "will", "could", "would", "anticipate", "believe", "expect", "intend", "potential", "estimate", "budget", "scheduled", "plans", "planned", "forecasts", "goals" and similar expressions or the negatives thereof. Forward-looking statements are neither historical facts nor assurances of future performance. Forward-looking statements are based on a number of factors and assumptions made by management and considered reasonable at the time such information is provided, and forward-looking statements involve known and unknown risks, uncertainties and other factors that may cause the actual results, performance or achievements to be materially different from those expressed or implied by the forward-looking statements.

Risk Factors that could cause actual results, performance or achievement to differ materially from those indicated in the forward-looking statements including those listed in this presentation under the heading "Risk Factors". Readers are cautioned that the foregoing list and the risk factors under the heading "Risk Factors" are not exhaustive. All of the forward-looking statements made in this presentation are qualified by these cautionary statements and other cautionary statements or other factors contained herein. Although management believes that the expectations conveyed by forward-looking statements herein are reasonable based on information available on the date such forward-looking statements are made, there can be no assurance that forward-looking statements will prove to be accurate, as actual results and future events could differ materially from those anticipated in such statements. The Company undertakes no obligation to update forward-looking statements if circumstances or management's estimates or opinions should change except as required by applicable securities laws. The forward-looking statements contained herein are presented for the purposes of assisting readers in understanding the Company's plan, objectives and goals and may not be appropriate for other purposes. The reader is cautioned not to place undue reliance on forward-looking statements.

CAUTIONARY NOTE REGARDING FUTURE-ORIENTED FINANCIAL INFORMATION

To the extent any forward-looking statement in this presentation constitutes "future-oriented financial information" or "financial outlooks" within the meaning of applicable Canadian securities laws, such information is being provided to demonstrate the anticipated market penetration and the reader is cautioned that this information may not be appropriate for any other purpose and the reader should not place undue reliance on such future-oriented financial information and financial outlooks. Future-oriented financial information and financial outlooks, as with forward-looking statements generally, are, without limitation, based on the assumptions and subject to the risks set out above under the heading "Forward Looking Information". The Company's actual financial position and results of operations may differ materially from management's current expectations and, as a result, the Company's revenue and expenses.

INDUSTRY INFORMATION

This presentation also contains or references certain market, industry and peer group data which is based upon information from independent industry publications, market research, analyst reports and surveys and other publicly available sources. Although the Company believes these sources to be generally reliable, such information is subject to interpretation and cannot be verified with complete certainty due to limits on the availability and reliability of data, the voluntary nature of the data gathering process and other inherent limitations and uncertainties. The Company has not independently verified any of the data from third party sources referred to in this presentation and accordingly, the accuracy and completeness of such data is not guaranteed.